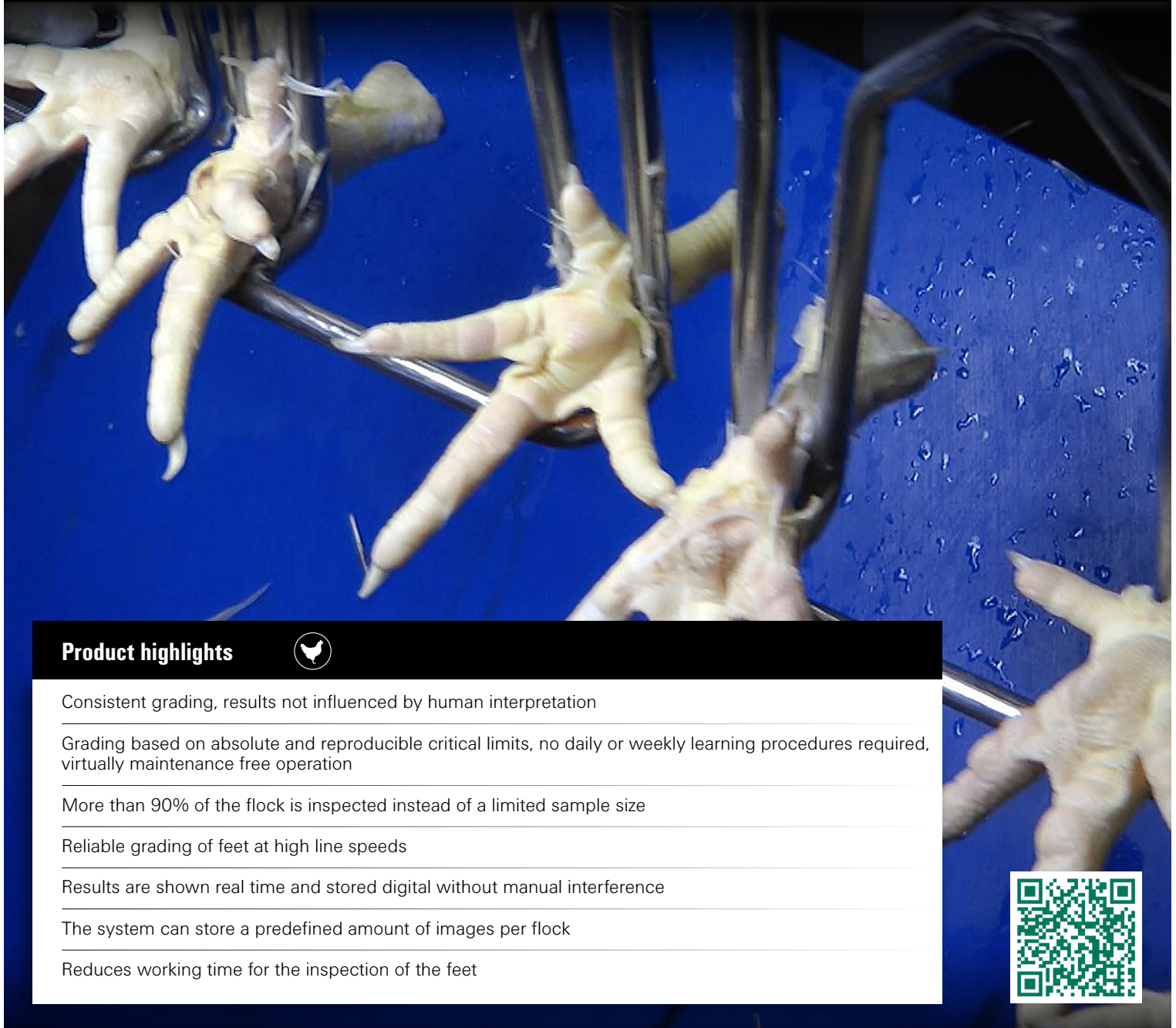


MEYN FOOTPAD INSPECTION SYSTEM

LIVE BIRD HANDLING | **SLAUGHTERING** | EVISCERATION | CHILLING | CUT UP | DEBONING | WEIGHING - GRADING - LOGISTICS



Product highlights



Consistent grading, results not influenced by human interpretation

Grading based on absolute and reproducible critical limits, no daily or weekly learning procedures required, virtually maintenance free operation

More than 90% of the flock is inspected instead of a limited sample size

Reliable grading of feet at high line speeds

Results are shown real time and stored digital without manual interference

The system can store a predefined amount of images per flock

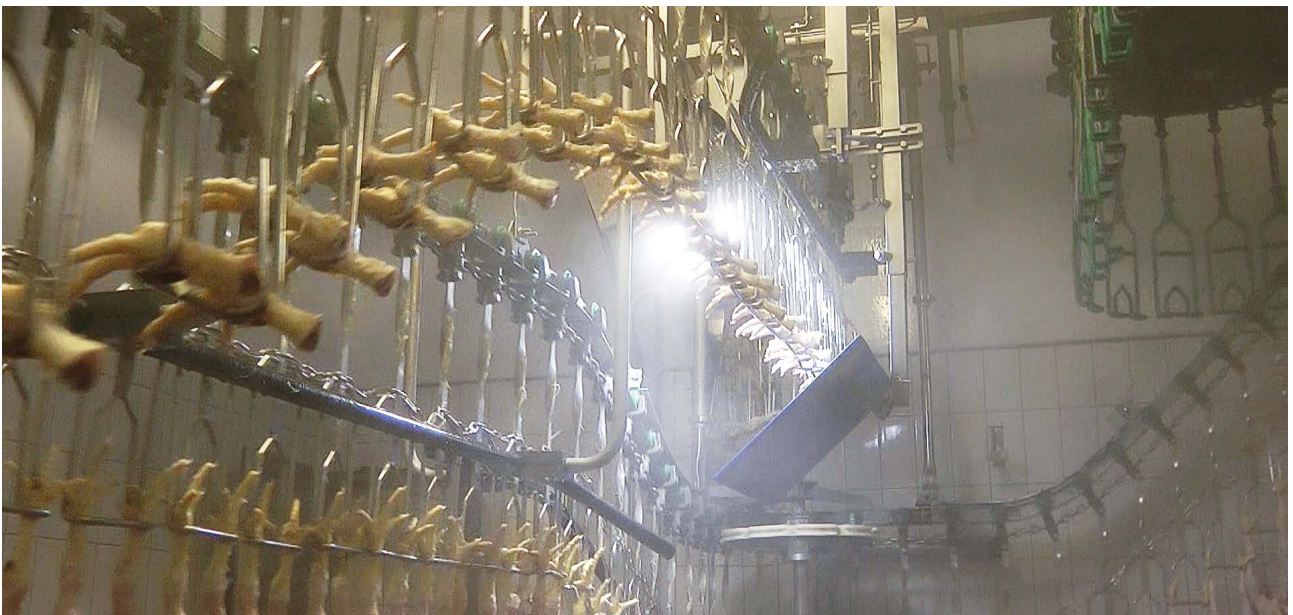
Reduces working time for the inspection of the feet



Meyn footpad inspection system

Footpad lesions are considered an important indicative parameter for broiler welfare and the systematic assessment of the occurrence ratio of footpad lesions in processed flocks is becoming part of regulations in many countries.

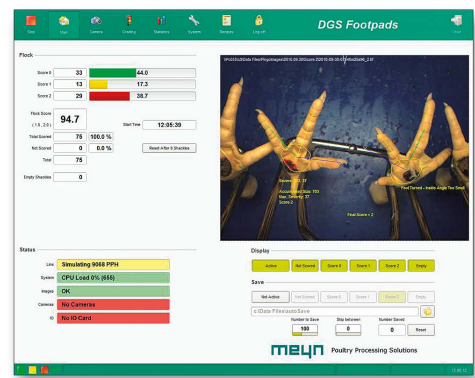
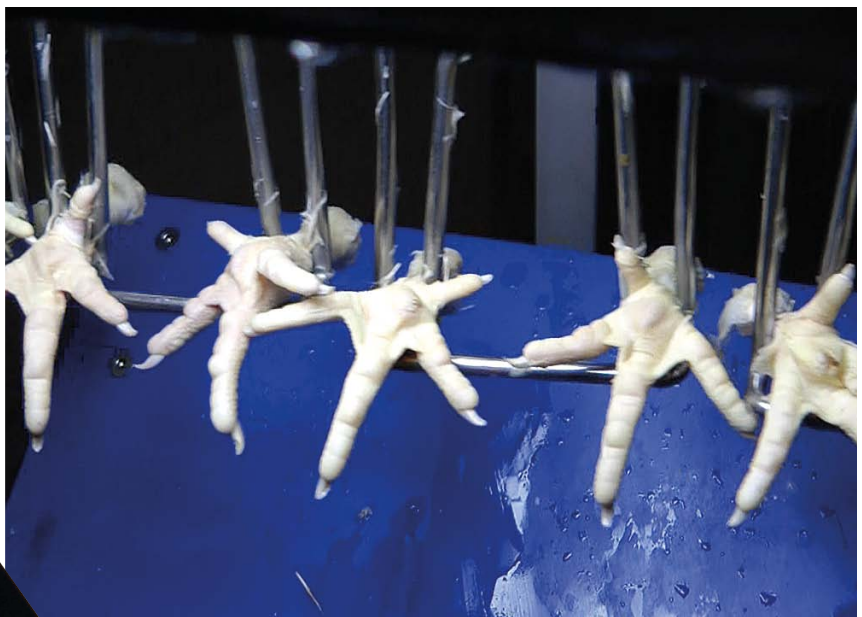
In many processing facilities this monitoring is done by a manual time consuming check of two random samples of 50 feet each. A specially trained employee then scores the feet based on the Swedish score card. However, this manual check can result in inconsistencies in grading as a result of human interpretation. Furthermore, the sample size is too small to give a good statistical representation of the flock and can therefore not be used as valid feedback and control mechanism.



Operation

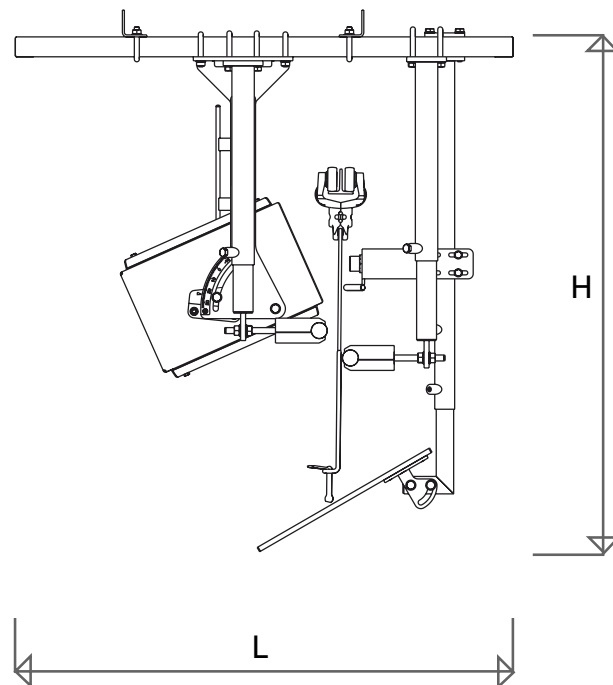
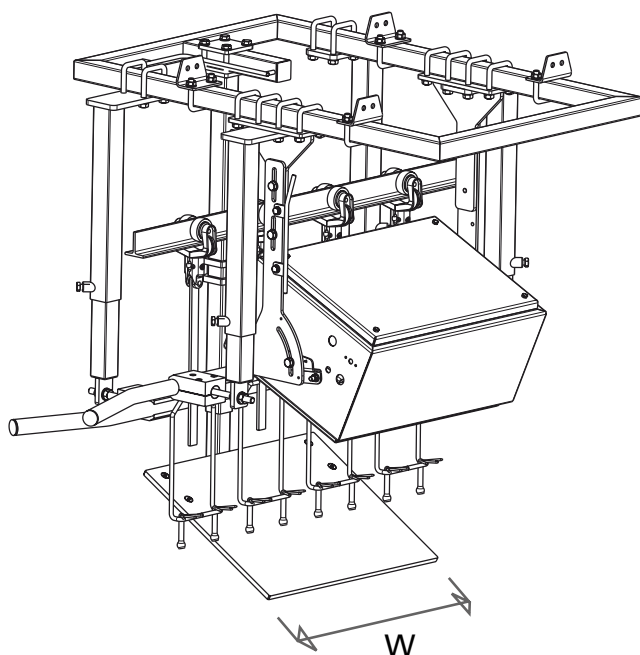
Situated in the slaughtering line, the Meyn footpad inspection system automatically detects the occurrence of lesions by means of digital imaging. The control software will grade each footpad in one of three classes according to the Swedish Animal Welfare scorecard which is based on color and size of the lesion. For each flock, the percentage per class is calculated and registered. Grading scores are stored per flock in a database, which can be used for

creating reports. The reports can be used as a tool for feedback to the farmers about the status of their flocks. This can help to improve animal welfare conditions in the breeding house. In the end, a chicken or flock that has been raised under optimal conditions, will be healthier and can be associated with better yield results.





Meyn footpad inspection system



Capacity	BPH	15,000
Shackle pitch	inch	6
Length (L)	mm	1,000
Width (W)	mm	750
Height *(H)	mm	1,080
Weight	kg	40
Electric power installed	kW	0.1

*Depending on shackle type and steel construction

HEAD OFFICE

Meyn Food Processing Technology B.V.
Westeinde 6, 1511 MA Oostzaan (Amsterdam)
P.O. Box 16, 1510 AA Oostzaan
The Netherlands

Phone: +31 (0)20 2045 000
Fax: +31 (0)20 2045 001
E-mail: sales@meyn.com
www.meyn.com



Poultry Processing Solutions